



Grove City, Pennsylvania
Durham, North Carolina
pineinstrument.com



Three Companies. One Standard.

Pine Instrument Company was founded in 1962 to meet industry demands as a vendor focused on providing value, responsiveness and high quality, machining, electronic and mechanical assembly to regional OEM's.

Today, the ideals on which the original business was formed have enabled Pine Instrument Company to expand beyond its original scope to become the PINE group of companies, which includes

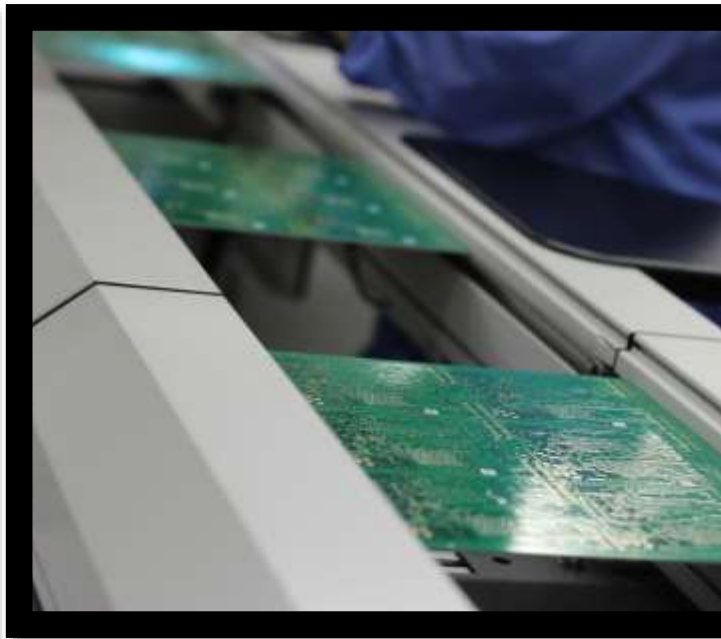
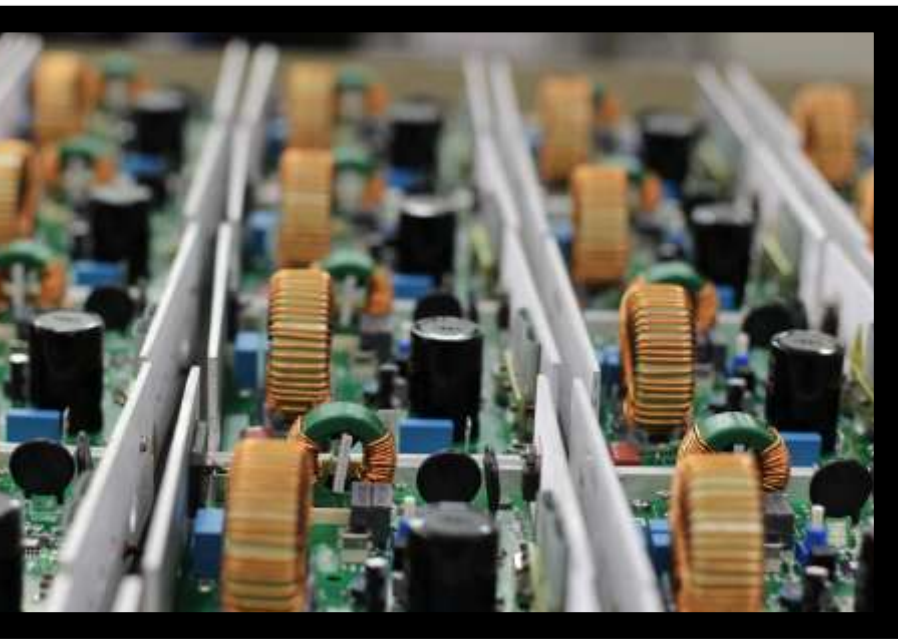
 Pine Electronics, Inc.

 Pine Research Instrumentation, Inc.

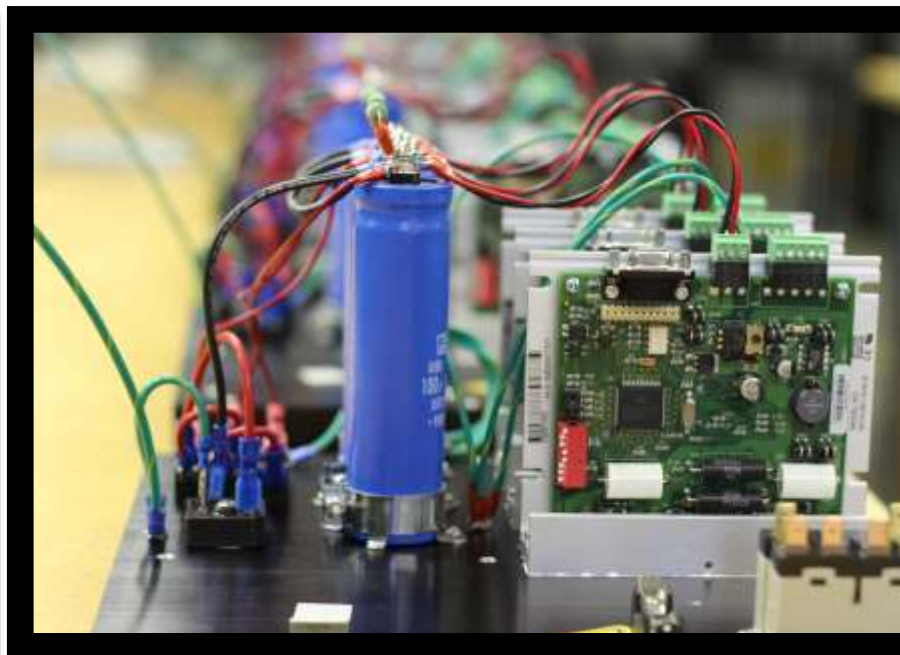
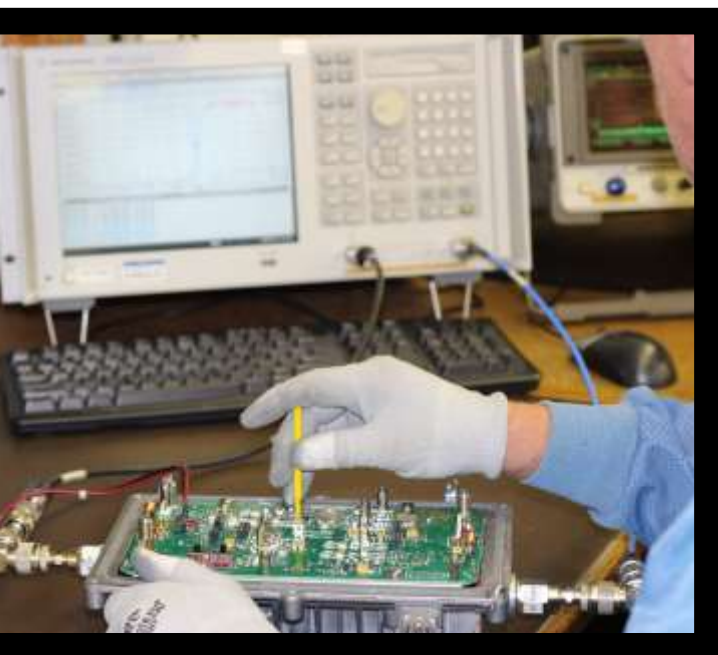
 Pine Test Equipment, Inc.

Each of these three distinct entities is devoted to fulfilling the specialized demands of its customers, from electrochemistry research instrumentation to road construction materials testing equipment to PCB electronics assembly.

Pine offers the personalized attention of a small company with the resources and expertise of a larger one - focused on turning challenges into solutions.



 Contract
Manufacturing





Pine Electronics, Inc. provides electronic contract manufacturing services to customers designing and producing equipment for industrial applications. Pine's wide range of printed circuit board, cable, and box build assembly solutions deliver a valuable alternative to customers needing the expertise to complement their business.

Known to be a full-service partner, Pine Electronics utilizes their proprietary ERP system to support the unique complexities of contract manufacturing. Their value-added approach to partnership lowers the cost of ownership making their contract services an appealing option for many companies.

Significant investment in equipment, engineering and technical talent has positioned Pine to serve both multi-national and regional customers throughout the United States. Their quality work can be found in mass transit cars, airport runways, materials testing equipment, electrochemistry instrumentation and lift equipment.

manufacturing

PINE



Electrochemistry
Instrumentation





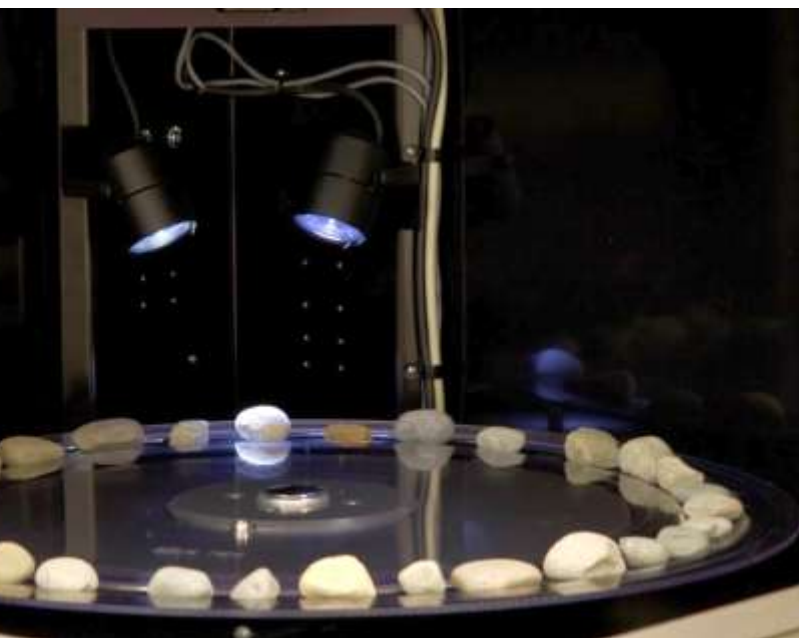
Pine Research Instrumentation, Inc. specializes in electrochemical research instrumentation. From their location in Durham, North Carolina, their team of chemists, engineers, scientific educators and product specialists have a comprehensive understanding of research requirements and a passion for accuracy and control with instrumentation.

Their entry into the electrochemistry industry started in the 1970's as a collaborator with the University of Wisconsin. A chemistry research professor with the support of Pine developed the first commercial-grade electrode rotator. And more than four decades later are still known as the world leader in electrode rotation.

Pine Research's internationally-known rotators, electrodes, glassware, and potentiostats provide scientists the necessary tools for conducting their research. Their proprietary software presents the data for easy analysis that impact the industries related to corrosion control, batteries and fuel cells.

researchinstrumentation





Materials Testing





Pine Test Equipment, Inc. has been serving the materials testing industry for more than 50 years. Located in Grove City, PA, 60 miles north of Pittsburgh, their test equipment supports the quality, research and development activities of the asphalt, concrete, and aggregate markets. The company serves its customers with well-engineered equipment, a solid sales team, talented field service techs and 24/7 technical support.

An industry pioneer, Pine Test is known around the world. Their history originated as the manufacturer of Marshall Testing Equipment. A solid reputation and success resulted as one of the original producers of the Superpave Gyratory Compactor for the Strategic Highway Research Program (SHRP). Complementing the flagship gyratory compactor, Pine Test also provides aggregate imaging instrumentation for classifying aggregate and an instrument for measuring the coefficient of thermal expansion of concrete.

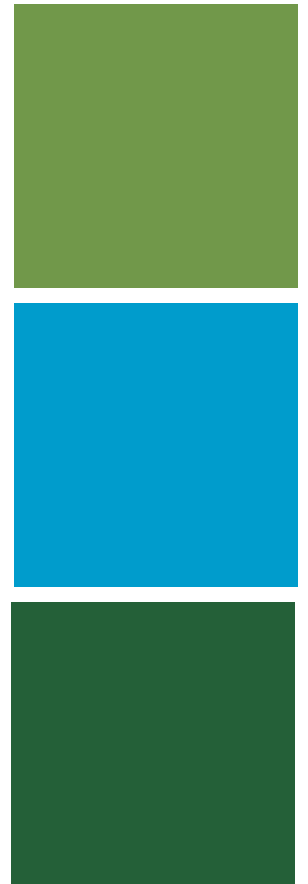
Pine Test's equipment has been instrumental in the design and development of safer, longer lasting roads. And is used in private industry, government labs and academic institutions world-wide. They are the standard by which other machines are measured.

materials testing

PINE

“Our employees who design, develop, and build products as well as those who provide business and customer support are our most valuable assets. The investment we have made in hiring and developing the best people radiates in every customer's experience with a Pine employee. We are truly a company defined by the character and integrity of our people. “

- Joe Hines, President





Pine Electronics, Inc.
101 Industrial Drive, Grove City, PA 16127
P 724.458.6391 f 724.458.4648
www.pineelectronics.com



Pine Research Instrumentation, Inc.
2741 Campus Walk Avenue, Bldg. 100
Durham, NC 27705
P 919.782.8320 f 919.782.8323
www.pineresearch.com



Pine Test Equipment, Inc.
101 Industrial Drive, Grove City, PA 16127
P 724.458.6393 f 724.458.6418
www.pinetestequipment.com



Pine Instrument Company
101 Industrial Drive Grove City, PA 16127
P 724.458.6391 f 724.458.4648
www.pineinstrument.com