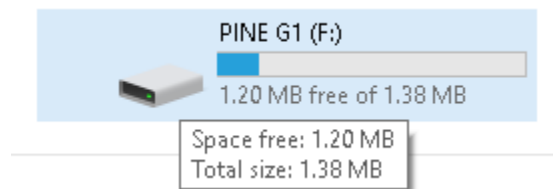


Repairing disk errors on a USB flash stick in Windows 10

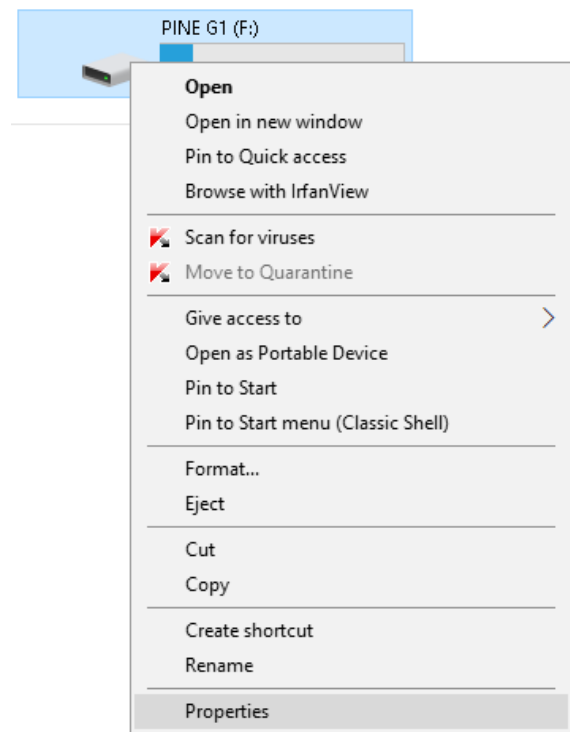
1. Load the flash stick in the computer's USB port and find the drive icon:



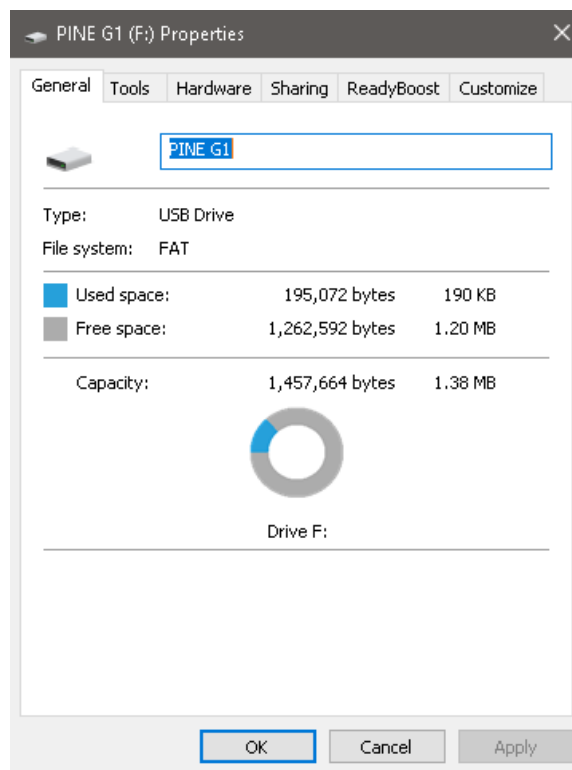
If the stick is intended for use in the AFG1A20 emulator (an upgrade to the original floppy disk drive on a Pine G1), the total size must be 1.38 MB. If it is larger, typically in the GB range, the stick is not formatted properly for emulator usage and will not work in that device.

All other Pine compactors and the Pine AFDL1 Data Logger do not use the specially-formatted 1.38 MB sticks. Many off-the-shelf products are compatible with them. FAT32 with 4 KB cluster size is the recommended disk format.

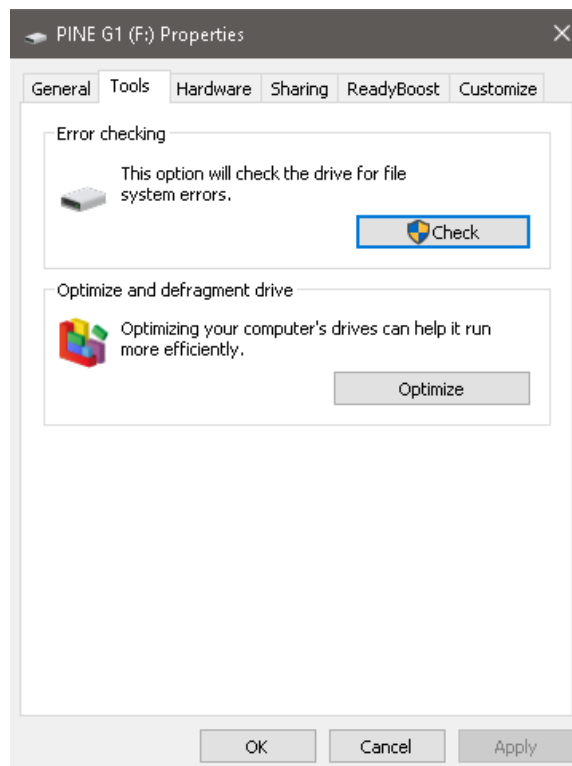
2. Right-click on the drive icon and select **Properties** from the drop-down menu:



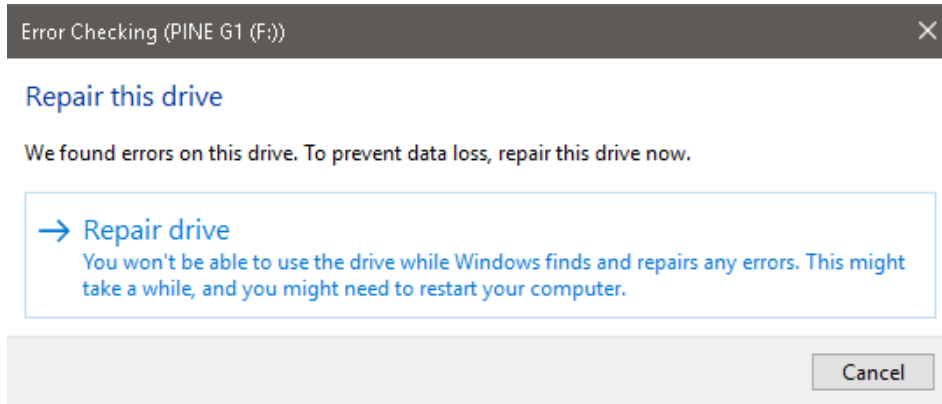
3. This window will open:



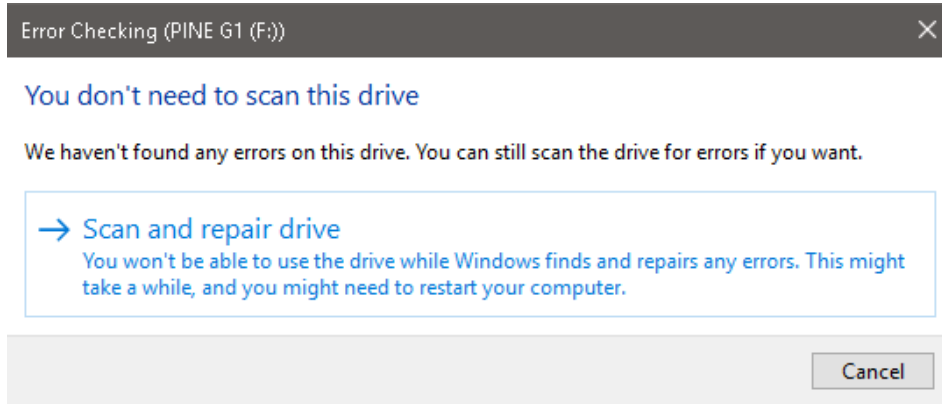
4. Select the Tools tab and select **Check**:



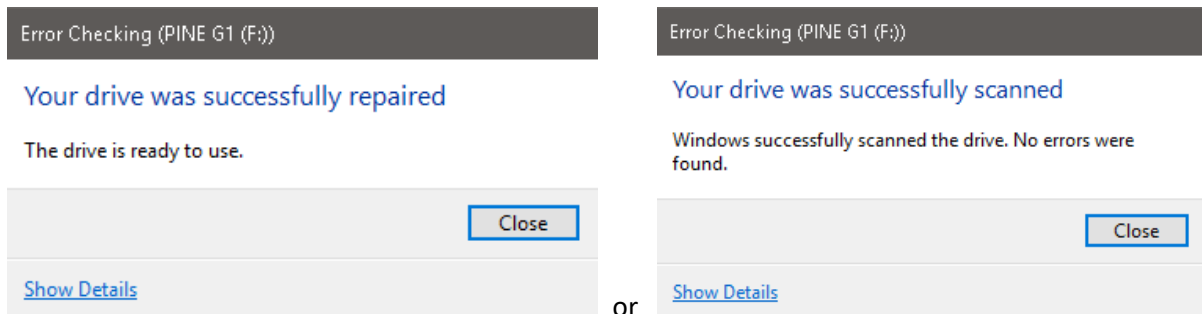
5. If this Tool is enabled on your PC (see * below), it may detect repairable errors:



Or, it may not:



6. Scan the drive regardless. Errors may be repaired even if they were not detected initially.



Older Windows have slightly different text and options, but procedures are similar. For example, XP has checkboxes to "Automatically fix file system errors" and "Scan for and attempt recovery of bad sectors". These boxes should be checked. In general, sticks that function properly on a PC should function in a compactor or Data Logger. (AFG1A20 sticks must be formatted properly.) If problems persist after the scan/repair procedure, try different flash sticks. While products provided by Pine are known to be compatible with each other, third-party items may not. Finally, it is also possible that your compactor's USB circuitry or Data Logger is faulty. Contact Pine's Help Desk for more assistance: 724.458.6393. *If Error Checking is disabled on your PC, contact your IT administrator.